



# ATSARGINĖS DALYS

„GUSTAVSBERG“ UNITAZAMS 1977–2017



325 T  
1977 - 1986



325 X  
1985 - 1995



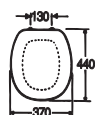
NORDIC-BASIC 390  
1992 - 2002



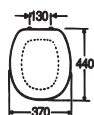
NORDIC-BASIC 390  
1992 - 2002



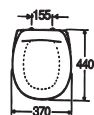
SKANDIC 330  
1995 - 2005



STANDARD SEAT  
AND COVER  
GB192 9900 226



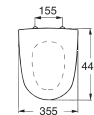
STANDARD SEAT  
AND COVER  
GB192 9900 226



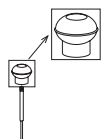
STANDARD SEAT  
AND COVER  
GB191 9901 702



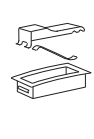
STANDARD SEAT  
AND COVER  
GB191 9901 702



HARD PLASTIC SEAT  
AND COVER  
GB191 99001601



NP-11 PUSHBUTTON  
GB192 9900 237



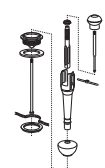
NT-21 PUSHBUTTON  
GB192 9900 208



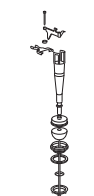
ST-17 CISTERN  
COVER WITH  
PUSHBUTTON  
GB192 9900 283



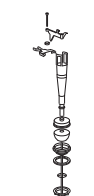
ST-24 CISTERN  
COVER WITH  
PUSHBUTTON  
GB192 9900 338



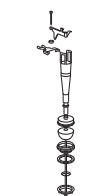
NP-20 OUTLET VALVE  
GB192 9900 238



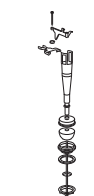
ST OUTLET VALVE  
GB192 9900 282



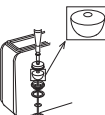
ST OUTLET VALVE  
GB192 9900 282



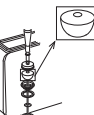
ST OUTLET VALVE  
GB192 9900 282



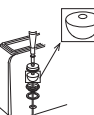
ST OUTLET VALVE  
GB192 9900 282



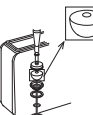
NC VALVEBALL  
GB192 9900 260



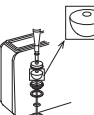
NC VALVEBALL  
GB192 9900 260



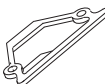
NC VALVEBALL  
GB192 9900 260



NC VALVEBALL  
GB192 9900 260



NC VALVEBALL  
GB192 9900 260



CISTERN SEALING  
GB192 9900 216



CISTERN SEALING  
GB192 9900 216



CISTERN SEALING  
GB192 9900 320



CISTERN SEALING  
GB192 9900 320



CISTERN SEALING  
GB192 9900 344



1. GB-INLET VALVE  
9GS01300



1. GB-INLET VALVE  
9GS01300



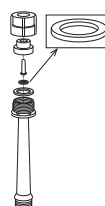
1. GB-INLET VALVE  
9GS01300



1. GB-INLET VALVE  
9GS01300



1. GB-INLET VALVE  
9GS01300



TF-11 RUBBER  
MEMBRANE  
GB192 9900 229



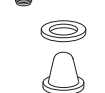
TF-11 RUBBER  
MEMBRANE  
GB192 9900 229



REPLACEMENT  
OUTLET VALVE  
REPLACEMENT VALVE,  
DUO (1993-2002)  
GB19299N2937



REPLACEMENT  
OUTLET VALVE  
REPLACEMENT VALVE,  
DUO (1993-2002)  
GB19299N2937



TF-9 FILTER  
GB192 9900 228



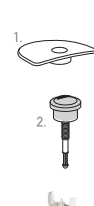
TF-9 FILTER  
GB192 9900 228



1. CISTERN COVER  
GB19299U1931  
2. PUSHBUTTON  
DUO  
GB192 99T2 951  
PUSHBUTTON  
SINGLE  
GB192 99T2 952



1. CISTERN COVER  
GB19299U1931  
2. PUSHBUTTON  
DUO  
GB192 99T2 951  
PUSHBUTTON  
SINGLE  
GB192 99T2 952



1. CISTERN COVER  
GB19299T2800  
2. PUSHBUTTON  
DUO  
GB192 99T2 951  
PUSHBUTTON  
SINGLE  
GB192 99T2 952



REPLACEMENT  
VALVE DUO  
GB19299N2937

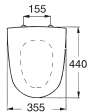


# ATSARGINĖS DALYS

„GUSTAVSBERG“ UNITAZAMS 1998–



**CLASSIC 360-364**  
1998 - 2007



HARD PLASTIC SEAT AND COVER, WHITE  
GB191 9901 601  
BLACK  
GB191 9901 610



CISTERN SEALING  
GB192 9900 344



1. CISTERN COVER TWICO  
GB192 99T1 929  
2. PUSHBUTTON DUO  
GB192 99T2 951  
PUSHBUTTON SINGLE  
GB192 99T2 952



BOTTOM VALVE GASKET TWICO  
GB192 99TK 962



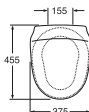
OUTLET VALVE DUO BUTTON  
GB19299N2953  
OUTLET VALVE SINGLE BUTTON  
GB19299N2953 + GB19299N2952



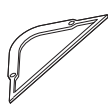
1. GB-INLET VALVE  
9GS01300



**NORDIC 23XX**  
2002 -



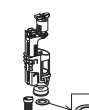
STANDARD SEAT AND COVER  
GB191 9902 002



CISTERN SEALING  
GB192 9900 320



1. CISTERN COVER  
GB192 99K1 931  
2. PUSHBUTTON DUO  
GB192 99T2 951  
PUSHBUTTON SINGLE  
GB192 99T2 952



BOTTOM VALVE GASKET TWICO\*  
GB192 99TK 962



OUTLET VALVE DUO BUTTON\*  
GB19299N2953  
OUTLET VALVE SINGLE BUTTON  
GB19299N2953 + GB19299N2952

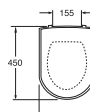


1. GB-INLET VALVE\*  
9GS01300

\*Also fits for Nordic 339, 393U and 398



**ARTIC 43XX**  
2005 - 2018



HARD PLASTIC SEAT AND COVER  
9M16S101



CISTERN SEALING  
GB192 9900 504



1. CISTERN COVER  
GB192 9900 500  
2. PUSHBUTTON DUO  
GB19299N2951  
PUSHBUTTON SINGLE  
GB192 99T2 952



BOTTOM VALVE GASKET TWICO  
GB192 99TK 962



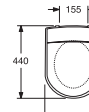
OUTLET VALVE DUO BUTTON  
GB19299N2953  
OUTLET VALVE SINGLE BUTTON  
GB19299N2953 + GB19299N2952



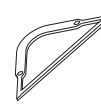
1. GB-INLET VALVE  
9GS01300



**LOGIC 56XX**  
2007 - 2013



HARD PLASTIC SEAT AND COVER  
9M016101



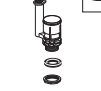
CISTERN SEALING 5696  
GB1929900506  
CISTERN SEALING 5695  
GB192 1100 209



1. CISTERN COVER  
8193 B9 01  
2. PUSHBUTTON DUO  
GB192 99T2 951  
PUSHBUTTON SINGLE  
GB192 99T2 952



BOTTOM VALVE GASKET TWICO  
GB192 99TK 962



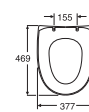
OUTLET VALVE DUO BUTTON  
GB19299N2953  
OUTLET VALVE SINGLE BUTTON  
GB19299N2953 + GB19299N2952



1. GB-INLET VALVE  
9GS01300



**NAUTIC 55XX**  
2010 - 2017



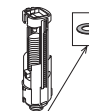
STANDARD COVER  
9M246101



ACTUATOR DUAL, WHITE  
GB19299P0108  
ACTUATOR DUAL, CHROME  
GB19299P0110



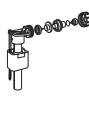
ACTUATOR SINGLE, WHITE  
GB19299P0109  
ACTUATOR SINGLE, CHROME  
GB19299P0111



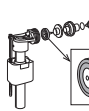
BOTTOM VALVE GASKET TWICO  
GB19299TK962



OUTLET VALVE  
GB19299P0102



FILL VALVE COMPLETE  
GB19299P0105



MEMBRANE  
GB19299P0106



# ATSARGINĖS DALYS

„GUSTAVSBERG“ UNITAZAMS 2015-



NAUTIC  
2017 -



NORDIC<sup>3</sup>  
2015 - 2017



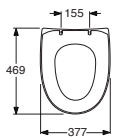
NORDIC<sup>3</sup>  
2017 -



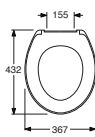
ESTETIC  
2016 - 2017



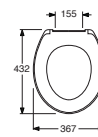
ESTETIC  
2017 -



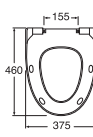
SEAT STANDARD  
9M246101



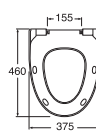
SEAT STANDARD  
9M646101



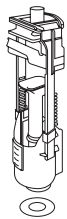
SEAT STANDARD  
9M646101



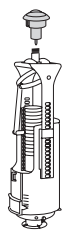
SEAT STANDARD  
9M106101



SEAT STANDARD  
9M106101



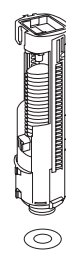
OUTLET VALVE  
9GN00100



OUTLET VALVE  
GB19299P0202



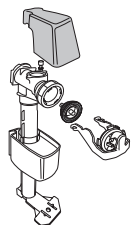
OUTLET VALVE  
9GS01600



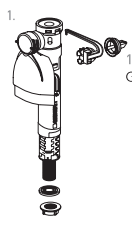
OUTLET VALVE  
GB19299P0102



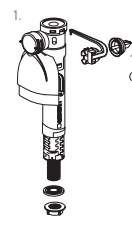
OUTLET VALVE  
9GN00100



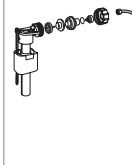
INLET VALVE  
9GN00200



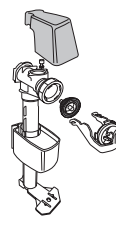
1. GB-INLET VALVE  
GB1929901972



1. GB-INLET VALVE  
GB1929901972



INLET VALVE  
GB19299P0105



INLET VALVE  
9GN00200



ACTUATOR DUAL,  
HIGH VERSION,  
CHROME  
9GN00561



PUSHBUTTON  
GB19299P0201



PUSHBUTTON  
9GS01561



PUSHBUTTON  
GB19299P0801



PUSHBUTTON  
87569961



ACTUATOR SINGLE,  
HIGH VERSION,  
CHROME  
9GN00661



ACTUATOR DUAL,  
LOW VERSION,  
CHROME  
9GN01161

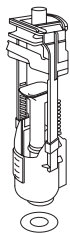
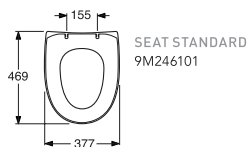


# ATSARGINĖS DALYS

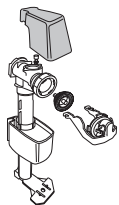
„GUSTAVSBERG“ UNITAZAMS 2019–



6000 SERIES  
from 2019 -



OUTLET VALVE  
9GN00100



INLET VALVE  
9GN00200



PUSHBUTTON  
87569961